

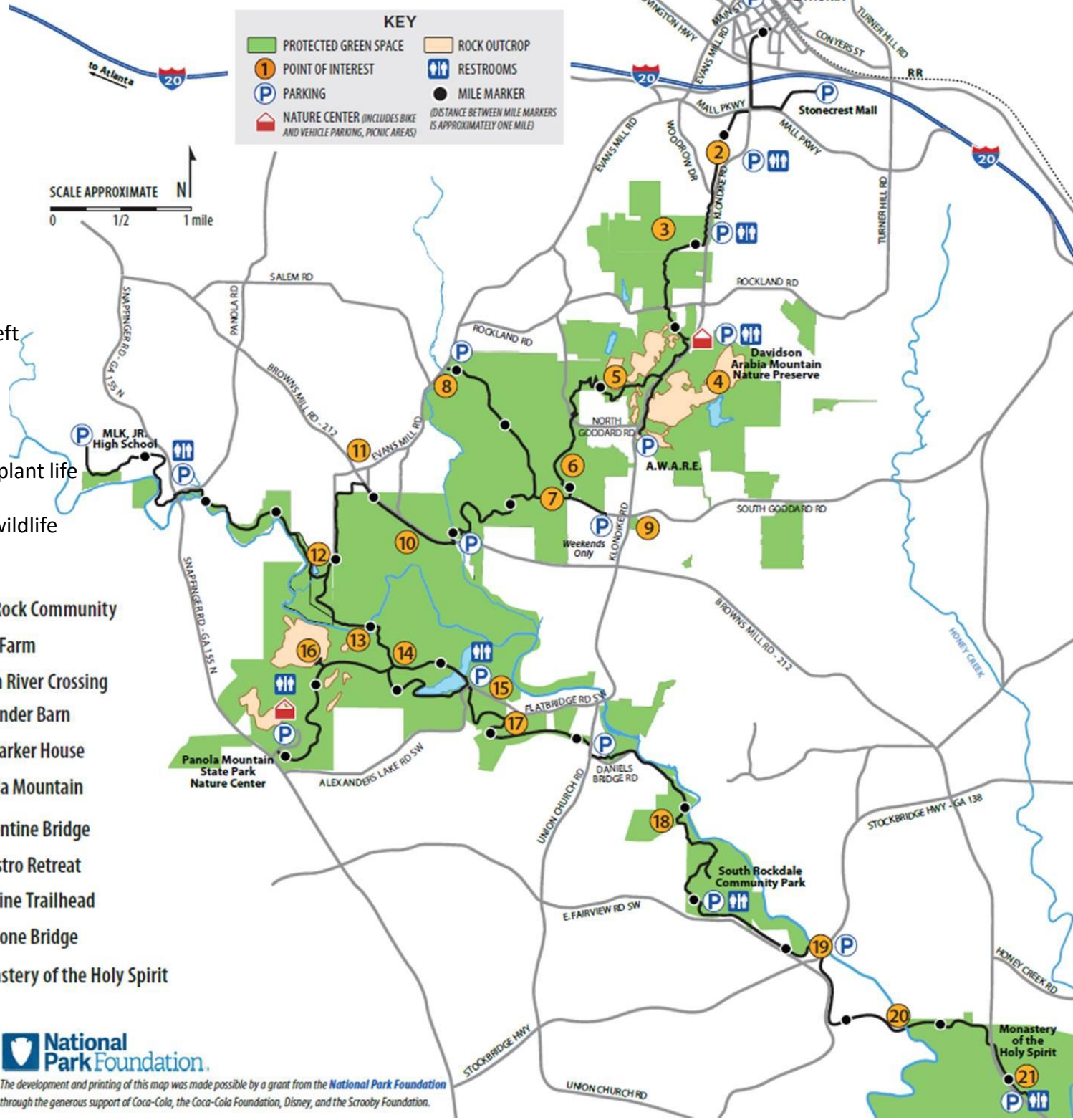
# AMP

## Ambassadors

### AMP Rules

- Obey all posted rules and regulations
- AMP Hours: Dawn until Dusk
- Bicyclists and Skaters should approach pedestrians cautiously and pass on the left
- Pets must be on a leash at all times
- Motorized vehicles are prohibited (except wheel chairs)
- Alcoholic beverages are prohibited
- Do not remove, damage, or destroy any plant life or property
- It is prohibited to kill, trap, or harm the wildlife (except those with a fishing license)

- |   |                                 |
|---|---------------------------------|
| 1 Historic District of Lithonia                 | 11 Flat Rock Community          |
| 2 Railroad Cut                                  | 12 Lyon Farm                    |
| 3 Vaughters' Farm                               | 13 South River Crossing         |
| 4 Arabia Mountain & Quarry Remnants             | 14 Alexander Barn               |
| 5 Quarry Office Ruins                           | 15 The Parker House             |
| 6 Farming Terraces                              | 16 Panola Mountain              |
| 7 Horace King Commemorative Covered Bridge      | 17 Serpentine Bridge            |
| 8 Evans Mill Ruins                              | 18 DeCastro Retreat             |
| 9 Historic District of Klondike                 | 19 Lorraine Trailhead           |
| 10 Pole Bridge Creek Wastewater Treatment Plant | 20 Keystone Bridge              |
|   | 21 Monastery of the Holy Spirit |



The AMP was designed and built by the PATH Foundation in cooperation with the partners of the Arabia Mountain Heritage Area Alliance.



The development and printing of this map was made possible by a grant from the National Park Foundation through the generous support of Coca-Cola, the Coca-Cola Foundation, Disney, and the Scooby Foundation.

**City of Lithonia Trailhead**  
Intersection of Johnson St. and Robinson St.

**Stonecrest Mall Trailhead**  
Parking available at the hotels near the mall. Use address 7910 Mall Ring Rd Lithonia, GA 30120.

**Stonecrest Library**  
3123 Klondike Rd, Lithonia, GA 30038

**Arabia Alliance Office**  
3350 Klondike Road, Lithonia, GA 30038

**Vaughters Farm Trailhead**  
3366 Klondike Rd, Lithonia, GA 30038

**Davidson-Arabia Mountain Nature Center**  
3787 Klondike Rd, Lithonia, GA 30038

**Arabia Mountain Trailhead and AWARE Center**  
4158 Klondike Rd, Lithonia, GA 30038

**Evans Mill Trailhead**  
4034 Evans Mill Road, Lithonia, GA 30038

**Flat Rock Archives**  
956 Crossvale Rd., Lithonia, GA 30038

**Panola Shoals Trailhead**  
4460 Panola Road, Lithonia, GA 30038

**Polebridge Creek Trailhead**  
6170 Browns Mill Road, Lithonia GA 30038

**Lyon Farm Historic House**  
4506 Lyons Road, Lithonia, GA 30038

**Panola Mountain State Park**  
2600 Georgia 155 SW, Stockbridge, GA 30281

**Panola Mountain State Park  
Alexander Lake Trailhead**  
5089 Flatbridge Rd.  
Stockbridge, GA 30281

**DeCastro Trailhead**  
Intersection of Union Street Rd and Daniels Bridge Rd,  
Stockbridge, GA 30281

**South Rockdale Community Park**  
3909 E. Fairview Rd, Stockbridge, GA 30281

**Lorraine Trailhead**  
3465 Highway 138 SE, Stockbridge, GA 30281

**Monastery of the Holy Spirit**  
2625 GA-212, Conyers, GA 30094

## Fast Facts

### **Panola Mountain State Park**

- Camping
- Bike, kayak, canoe, and paddle board rentals
- Guided hikes
- Archery range
- Fishing (permit required)

### **Davidson Arabia Mountain Nature Preserve**

- Guided hikes (almost every Friday and Sunday at 8am)
- Fishing permit required
- Special programs

### **AWARE Wildlife Rehabilitation Center**

- Free tours at the base of Arabia Mountain every Saturday and Sunday at 1pm

### **Monastery of the Holy Spirit**

- Open to the public
- Gothic Abbey Church, Heritage Center, bonsai garden, and amazing baked goods made by the monks

## Contact Numbers

### **Emergency/Crime 911**

**DeKalb County** non-emergency number (AMP from the city of Lithonia all the way south to the South River) 678-406-7929

**Rockdale County** non-emergency number (AMP from Panola Mountain State park all the way south to the Monastery of the Holy Spirit) 770-483-4200 Remember that this part of the trail has mile markers specifically for emergency calls. Try to locate a trail marker to help EMS find you.

**Davidson-Arabia Mountain Nature Preserve**  
770-492-5220

**Panola Mountain State Park** 770-389-7801

**Arabia Mountain Heritage Area Office** 404-998-8384  
**Kimberly Estep's Cell Phone** 770-542-7131